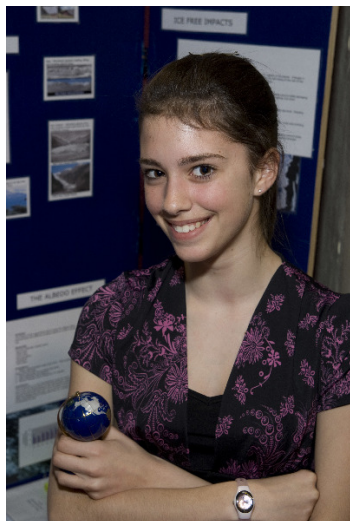


CWSF 2008 - Ottawa, Ontario



Our World On Thin Ice

Division: Engineering & Computing Sciences / Environmental Innovation

Category: Junior

Region:

City: ,

School:

Abstract: This project researched Global Warming, climate change, and the resulting effects on our world's ice. Experiments were performed to quantitatively investigate how melting ice will affect sea levels based on the Archimedes' Principle, how the rate of melting increases with rising temperatures, and how the earth's surface reflects or absorbs energy from the sun based on the Albedo of its surface.

Awards	Value
Honourable Mention - Environmental Innovation - Junior	\$100
Sponsor: EnviroExpo, Presented by VIA Rail Canada	
Total	\$100