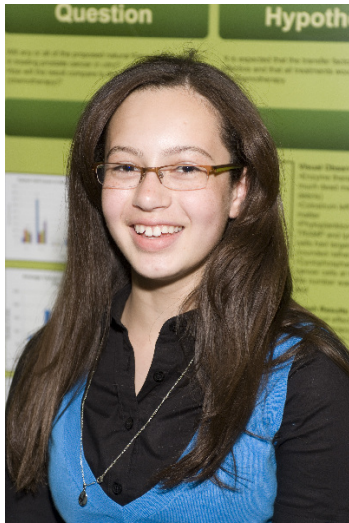


CWSF 2009 - Winnipeg, Manitoba



Nature Shock: An experimentation of Naturopathic Treatments for Prostate Cancer

Division: Life Sciences / None

Category: Intermediate

Region:

City: ,

School:

Abstract: Transfer Factors (from colostrum), Proteases (from papaya and pineapple), and Marine Phytoplankton were tested for their effectiveness in treating mouse prostate cancer cells and compared with cyclophosphamide (chemotherapy). It was found that the enzymes and colostrum were 95% and 70% effective respectively, in killing the cancer cells, which was considerably more than the chemotherapy. These results support potential applications for less toxic treatments for cancers.