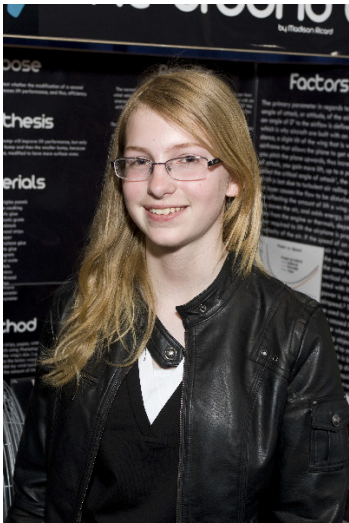


CWSF 2010 - Peterborough, Ontario



From The Ground Up

Division: Life Sciences

Category: Intermediate

Region:

City: ,

School:

Abstract: The experiment examined the potential for increased wing efficiency by adding a second curve to the modern airfoil. A scale was used to measure lift properties of the individual wing designs. It was determined that adding a second surface showed a lift increase, leading to the belief that the second surface did in fact produce a more efficient wing at this point in the study.

Awards	Value
The University of Western Ontario Scholarship Bronze Medallist - \$1000 Entrance Scholarship Sponsor: University of Western Ontario	\$1 000
Bronze Medal - Engineering - Intermediate Sponsor: Youth Science Canada	\$300
Total	\$1 300