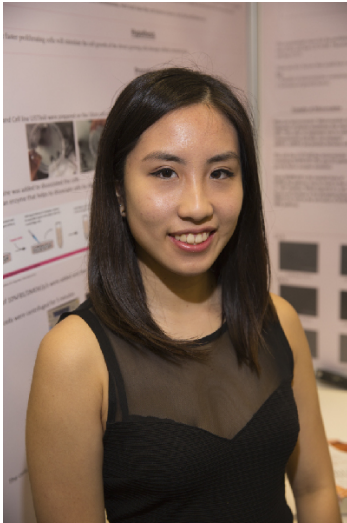


ESPC 2016 - Montreal (Québec)



Maria Kametani

M.A.R.I.E

Défi: Santé

Catégorie: Intermédiaire

Région: Montreal

Ville: Westmount, QC

École: The Study

Sommaire: In this experiment, the growth rate of the two cell lines were used to observe the cell mimicry. The cell line U373vIII has a faster proliferation rate and the cell line U373 has a slower growing rate. The hypothesis that the faster growing cells would stimulate the cell growth of the slower cells was proven correct, which supported the idea of cell mimicry.

Biographie

I'm a grade 10 student attending The Study in Montreal, Quebec. It's my first year attending the science fair, and I would like to thank my teacher, Ms. Palumbo for being so supportive and accompanying me to the provincial science fair. In addition, special thanks to Dr. Uetani for providing me with the time in her lab. I love biology, and I would like to be a neurologist (specializing in psychiatry) when I'm older because there're still many things that we don't know about the brain. In the future, it would be interesting to study the brain activity and the related mental disorders. Other than science, I like to run, play the guitar and bake.