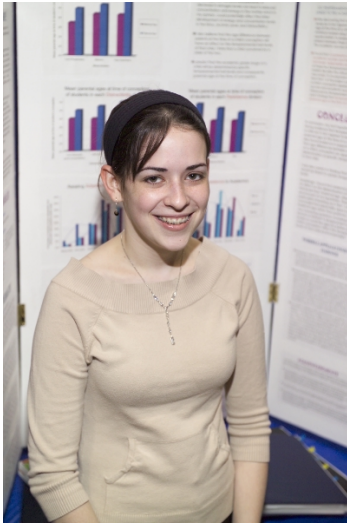


# CWSF 2006 - Saguenay, Québec



## Ashley Doyle

### Blame it on Your Parents? Part II: Temperamental Trait Investigation

**Division:** Life Sciences

**Category:** Senior

**Region:** Prince Edward Island

**City:** Cornwall, PE

**School:** Bluefield High School

**Abstract:** My project investigated the possibility of a correlation existing between parental age at the time of a child's conception and that child's temperament. Temperamental trait levels were measured using a self-report method and data was statistically analysed. A strong correlation was identified between specific temperamental trait levels and paternal age at the time of conception. Very little correlation was present between maternal age and temperament.

Awards	Value
Statistical Society of Canada Award	\$1 000
Sponsor: Statistical Society of Canada	
Total	\$1 000