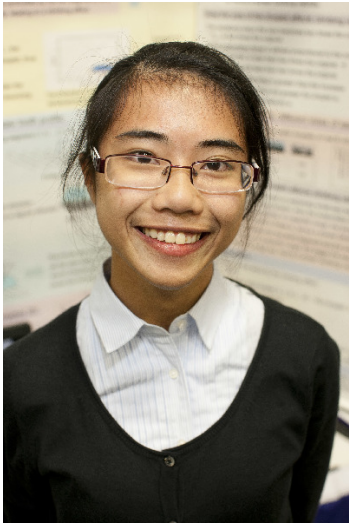


CWSF 2011 - Toronto, Ontario



Fang-Yu Chang

Investigation of water droplets climbing up hot saw blades

Challenge: International

Category: Junior

Region: Taiwan, R.O.C.

City: Taichung City,

School:

Abstract: Water droplet climbing up stacked saw blades with asymmetric saw tooth profile has been investigated. The climbing occurred at temperature about 400° with the incline up angle depending on the droplet's size. The driving forces are associated with the vapor pressure and recoiled momentum due to water evaporation.

Biography

My name is Chang, Fang-yum. I'm from Taiwan, and I'm studying in the eighth grade of Da-ya junior high school. My hobbies are reading and doing experiments. I'll keep doing experiments in the future. And I am really glad and honored to join this year's science fair.

Awards

Value

Gold Medal - International	
Sponsor: Youth Science Canada	
Total	\$0

