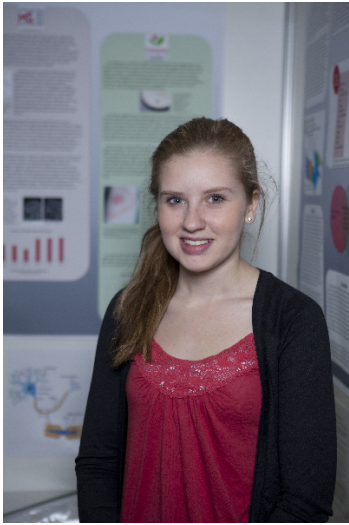


CWSF 2013 - Lethbridge, Alberta



Disease in Disguise

Challenge: Health

Category: Senior

Region:

City: ,

School:

Abstract: Historically, error has always been a significant part of medicine—specifically in diagnosis and treatment. Lyme disease is currently being recognized to have the ability to mimic symptoms of Multiple Sclerosis and in turn, commonly become misdiagnosed. This project is a study of why Lyme disease is being misdiagnosed as Multiple Sclerosis, and the possibility of decreasing the number of misdiagnosed cases.