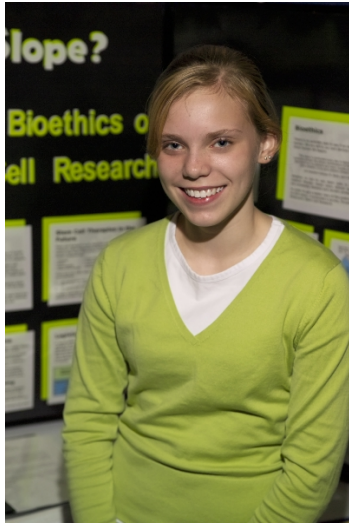


CWSF 2005 - Vancouver, British Columbia



Nicola Hutchinson

A Slippery Slope? The Bioethics of Stem Cell Research

Division: Health Sciences

Category: Junior

Region: Manitoba Schools Science Symposium

City: Winnipeg, MB

School: Manitoba Schools Science Symposium

Abstract: Stem cell research is rapidly making its way into society and has the potential to cure many incurable diseases. However, this new line of research is very controversial for different reasons. This project gives an outline of the research, its bioethics, and includes a public opinion survey on the issue.