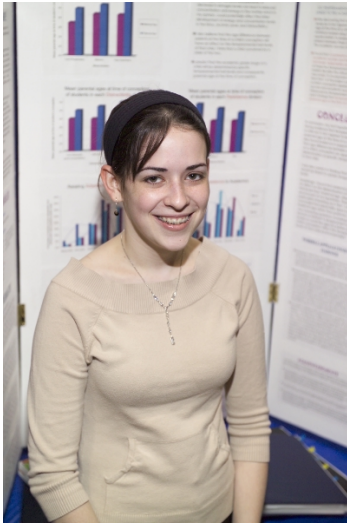


CWSF 2006 - Saguenay, Québec



Ashley Doyle

Blame it on Your Parents? Part II: Temperamental Trait Investigation

Division: Life Sciences

Category: Senior

Region: Prince Edward Island

City: Cornwall, PE

School: Bluefield High School

Abstract: My project investigated the possibility of a correlation existing between parental age at the time of a child's conception and that child's temperament. Temperamental trait levels were measured using a self-report method and data was statistically analysed. A strong correlation was identified between specific temperamental trait levels and paternal age at the time of conception. Very little correlation was present between maternal age and temperament.

Awards	Value
Statistical Society of Canada Award	\$1 000
Sponsor: Statistical Society of Canada	
Total	\$1 000